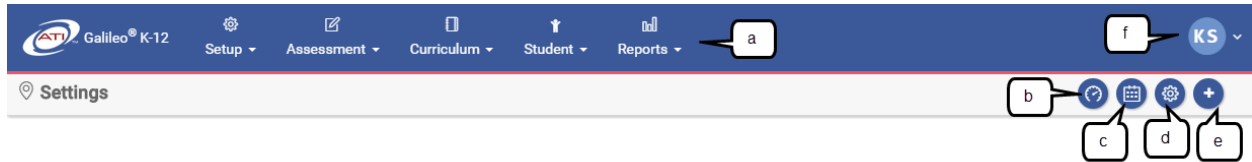




Galileo® K-12 Online: Menu Bar

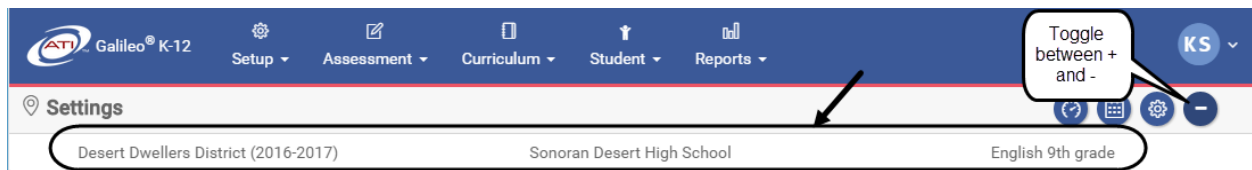
Navigating through the Galileo K-12 Online environment has become easier with redesigned menu options.



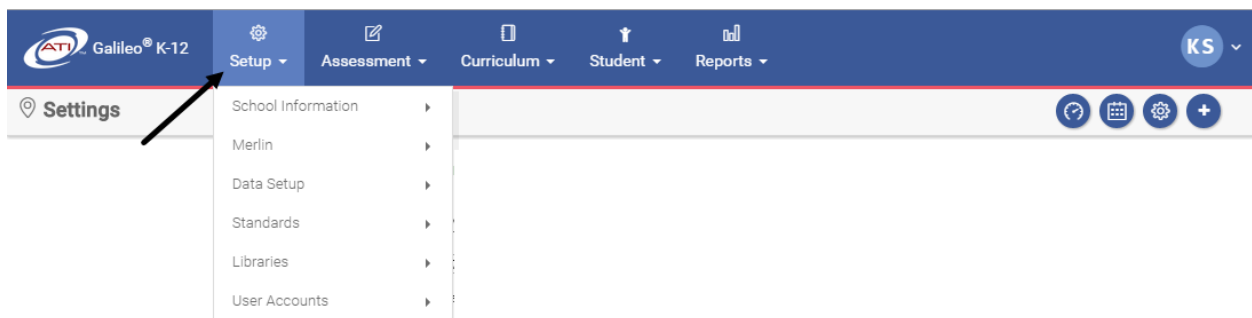
Legend	Description
A	Drop down menus to other pages within Galileo
B	Icon to access the Dashboard page
C	Icon to access the Class Calendar page
D	Icon to access the Settings page
E	View current Settings (year, school, and class)
F	User Options/Help drop-down menu

Access to menus is based on your Galileo user permissions. The following screen shots illustrate the menu options for a district-level user.

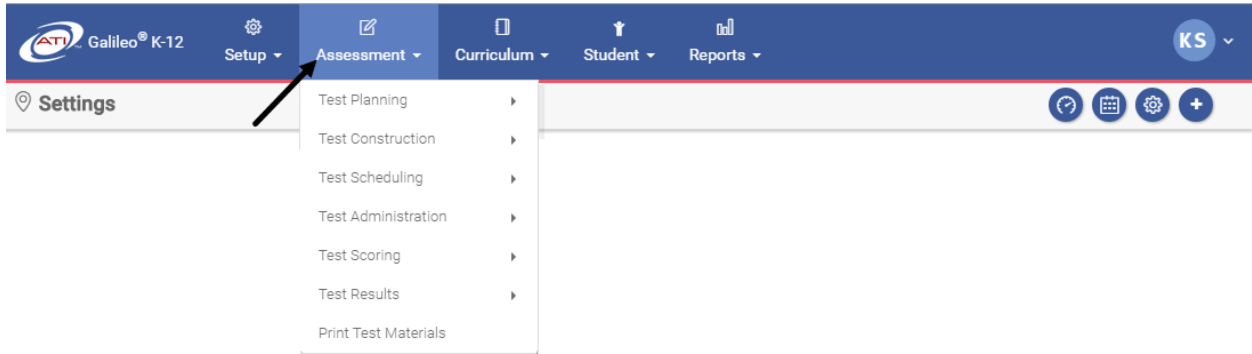
CURRENT SETTINGS



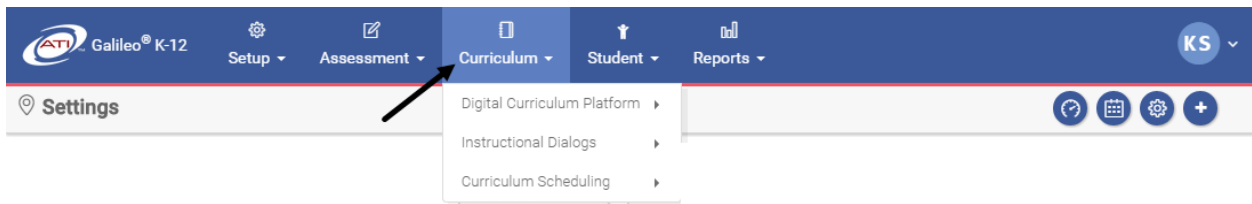
SETUP MENU



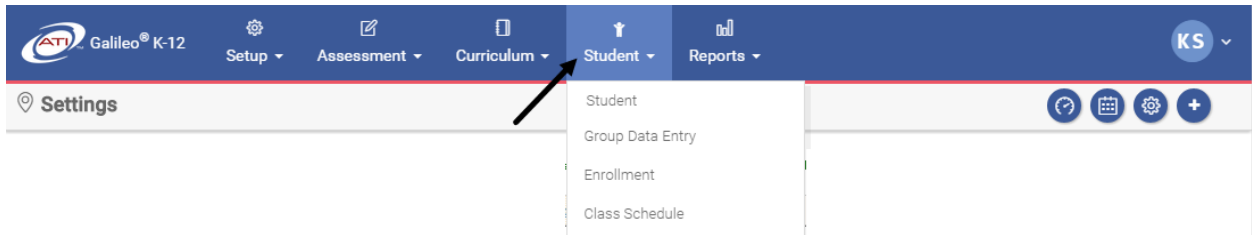
ASSESSMENT MENU



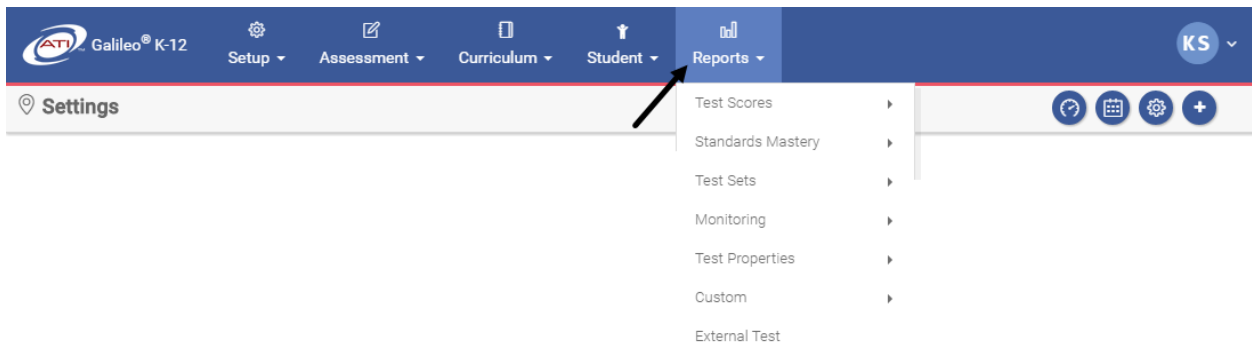
CURRICULUM MENU



STUDENT MENU

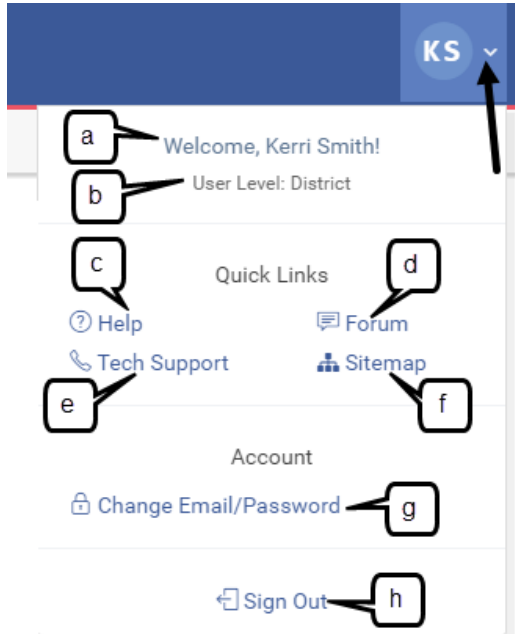


REPORTS MENU



USER OPTIONS/HELP MENU

Click the **User Options/Help** menu and select the desired user option and online help option.



- a. Your **name**
- b. Your **user level**
- c. **Help** - access instructions for using the different tools in Galileo
- d. **Forum** - access ATI's Professional Development Forum for sharing experiences and obtaining assistance and resources
- e. **Tech Support** - access support contact information, documents, and downloads
- f. **Sitemap** - is a representation of the architecture of the application
- g. **Change e-mail/password** - access **Change Email/Password** page
- h. **Sign Out** - logs you out of the application and brings you to the ATI homepage

Class-level users also have access to **My Staff Information** in the Account section.