



PARTICIPATE IN THE HEAD START Portrait OF CHILD OUTCOMES

Assessment Technology Incorporated

Head Start programs throughout the nation are currently using information on child outcomes in new ways to improve learning. The Head Start Portrait of Child Outcomes is the result of Head Start programs joining together and pooling their data, with assistance from Assessment Technology Incorporated (ATI), for the purpose of sharing successes in promoting children's learning. It is the goal of participating programs and ATI that the quality information provided in the Portrait be made available to Head Start programs, policy-makers, researchers, parents, and all of those individuals who are concerned with and dedicated to the challenge of promoting the development of our nation's children.

With access to real-time data, programs have a unique opportunity to provide a changing portrait of outcomes reflecting the course of children's learning throughout the program year. As more programs participate, the database grows giving programs a stronger voice in decisions occurring at the federal, state, and local levels.

Participation in the Head Start Portrait is completely voluntary. There is no cost or additional work involved in becoming a Portrait participant. To participate, programs must be entering outcome data on Galileo G3 Assessment Scales in Galileo Online and provide ATI with permission to include your program data in the Portrait. Acceptance for inclusion means that your data from the assessment scales in Galileo, as well as related demographic information, will be aggregated along with that of all other participating programs. This information will be presented in aggregated reports such as the Development Profile and Progress Reports. Aggregated demographic information will be presented in Demographic Reports. The Portrait does not provide any individual program reports, nor will any child's name or data appear.

To view real-time data of participating programs today, click on **Portrait of Child Outcomes - Head Start Data** in the Pre-K Spotlight at **ati-online.com**.

To be included in the Head Start Portrait of Child Outcomes, please complete the information below and fax it to ATI at 520.323.9139.

Yes, please include our program's Galileo Online demographic and assessment data as part of the aggregated data for the Head Start Portrait of Child Outcomes. I understand my program name will be listed as a participant but no data specific to my program, classes, or children will be shared or identified.

Program Name _____

Address _____

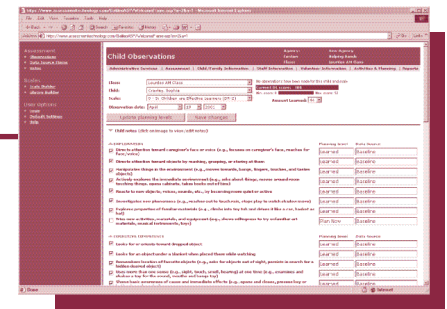
City _____ **State** _____ **Zip** _____

Phone (____) _____

Email _____

Approved by _____

Name _____ (please print)



If you have any questions,
please call your
Field Services Coordinator at
1.877.358.7611.

**Assessment
Technology
Incorporated**

6700 E. Speedway Blvd.
Tucson Arizona 85710

Phone:
1.877.358.7611

Email:
GalileoInfo@ati-online.com
ati-online.com

For ATI Use Only

SU	Ini	___	Date
CC	Ini	___	Date
GM	Ini	___	Date
COM	Ini	___	Date