

# Digital Curriculum Platform

Flexible Digital Curriculum Platform at no additional charge



The *Digital Curriculum Platform* is fully integrated into Galileo® K-12 Online and the Galileo *K-12 Student-Parent Center* at no additional cost. Built on the foundation of ATI's research, the *Platform* creates a seamless integration between standards-based, differentiated instruction, and assessment.

## INTEGRATE, DEVELOP, AND MODIFY CURRICULUM

The *Platform* contains a suite of online instructional tools that support the design building and implementing and monitoring of curriculums and lessons tailored to meet student needs. The *Platform* makes it possible to:

- easily integrate existing curriculum content, develop new content, and modify curriculums as needed
- easily design and disseminate units of study
- efficiently develop and implement lesson plans
- design empirically-based differentiated instruction
- rapidly link curriculum to benchmark, formative, and other types of assessments
- monitor student progress, standards mastery, and instructional impact

## INTEGRATION OF INSTRUCTION & INNOVATIVE ASSESSMENT

Data from integrated purposeful assessment of student learning is available to inform decisions regarding the next instructional offerings and possible modifications of the curriculum itself.

## INNOVATIVE BUILDER TOOLS FOR THE DIGITAL AGE

Curriculum builder tools support the inclusion of multimedia instructional content within courses, units, lessons and activities.

## READY-TO-IMPLEMENT CURRICULUM OPTIONS

The *Digital Curriculum Platform* offers direct access to curriculum options including:

- EngageNY curriculum and curriculum resources in English language arts (ELA) and math included in a Galileo license.
- *Dynamic Curriculum Strategies* developed by Crane Elementary School District (CESD). A standards-based curriculum solution aligned to Arizona State Standards for grades K-8 and carries a separate cost.

## Galileo Platform Tools Enhance Curriculum Implementation

### Digital Curriculum Builder

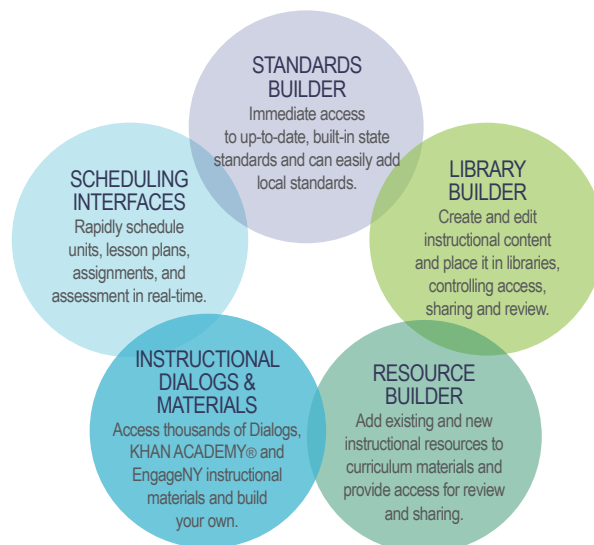
Create a series of online units representing a course or pacing guide and including vetted digital instruction and assessment resources

### Lesson Plan Builder

Organize digital content to plan instruction and assessment for a topic

### Dialog Builder

Create online interactive multimedia lessons and assignments integrating instruction, assessment, and teacher-student communication



# Galileo® K-12 Online

## ACCESS TO POPULAR RESOURCES

The *Platform* enables searching for and scheduling popular instructional resources including those from **KHAN ACADEMY®\***, **EngageNY**, and ATI prebuilt *Instructional Dialogs*.

\*KHAN ACADEMY® materials are also available for free at [www.khanacademy.org](http://www.khanacademy.org).

## A COST-EFFECTIVE SOLUTION FOR UP-TO-DATE CURRICULUM AND LESSONS

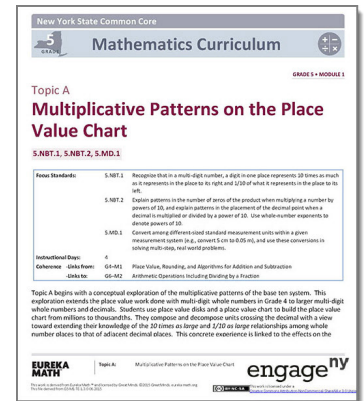
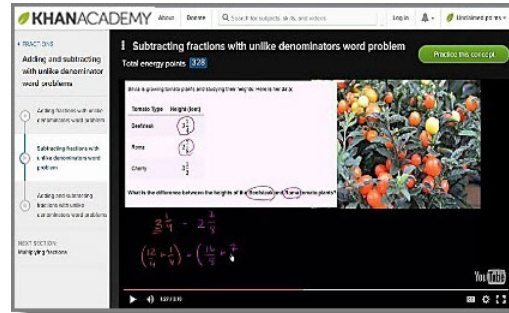
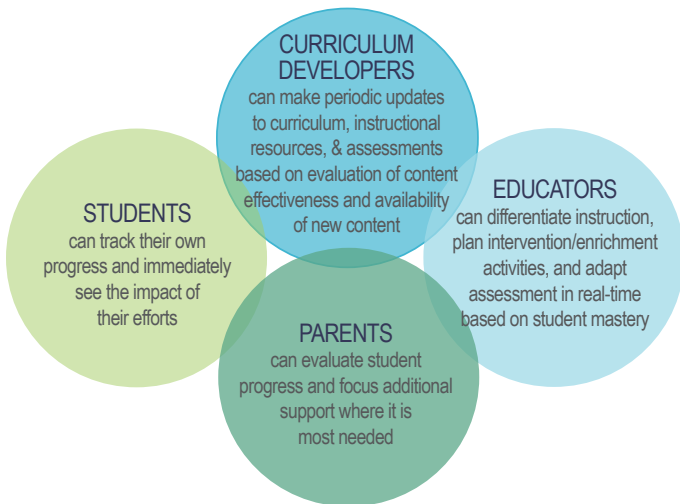
The *Digital Curriculum Platform* with access to EngageNY curriculum and curriculum resources is included in the per-student Galileo K-12 license fee. The platform provides curriculum lessons in addition to accommodating local district curriculum choices, teacher-designed lessons, and changing district and educator needs.

## INTERACTIVE INSTRUCTIONAL DIALOGS AND REAL-TIME FEEDBACK

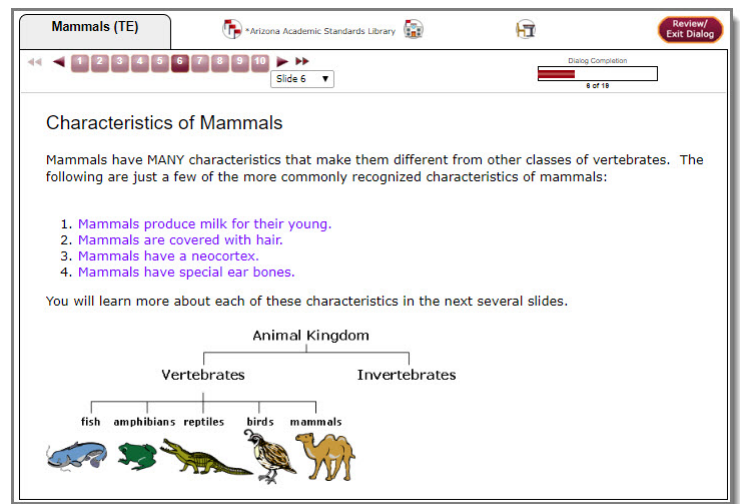
Schedule and implement engaging, multimedia online instructional dialogs combined with assessment containing technology enhanced (TE) items. Student responses to an array of selected-response and TE items are immediately scored and feedback is provided to the student to guide learning.

## CONNECTING STAKEHOLDERS

The Galileo *Digital Curriculum Platform* brings stakeholders together in the learning process. Through the *Platform* and Galileo *Dashboards*, teachers, specialists, and administrators have real-time access to a continuous portrait of instruction and student learning.



CURRICULUM  
RESOURCES  
popular instructional  
resources such as  
**KHAN ACADEMY®\***,  
**EngageNY**, and ATI prebuilt  
*Instructional Dialogs*



Visit [ati-online.com](http://ati-online.com) to learn more or contact us:  
 1.800.367.4762  
[GalileoInfo@ati-online.com](mailto:GalileoInfo@ati-online.com)  
 Find us:  
[facebook.com/AssessmentTechnologyIncorporated](https://www.facebook.com/AssessmentTechnologyIncorporated)  
[youtube.com/AssessmentTechnology](https://www.youtube.com/AssessmentTechnology)  
[townhallblog.ati-online.com](http://townhallblog.ati-online.com)